

# SUFFUSEII LED

## HOUSING

THE 3 1/2" INCH NOMINAL DEEP HSG TO BE FORMED FROM 20GA CRS. FINISHED BAKED WHITE ENAMEL (STANDARD) ALL FIXTURES ARE PRE-WIRED. ALL STEEL PARTS ARE PHOSPHATE TREATED FOR CORROSION RESISTANCE BEFORE PAINT PROCEDURE, THEN BAKED WITH SUPERIOR ADHESION FOR DURABILITY.

## LED MODULES

HIGHER EFFICACY UP TO 170 LPW WITH SERVICE LIFE GREATER THAN 60000(L70) HIGH COLOR RENDER AND EXCELLENT COLOR CONSISTENCY COLOR OPTIONS AVAILABLE FROM 27K TO 40K . 90 CRI LEDS AVAILABLE AS OPTIONAL

## DRIVERS

CONSTANT CURRENT, CLASS 2  
UNIVERSAL INPUT : 120-277VAC  
SOUND RATED A, 54V OUTPUT 0-10V  
DIMMING STANDARD . DALI, ECOSYSTEM  
AND DMX DRIVERS ALSO AVAILABLE

## REFLECTOR

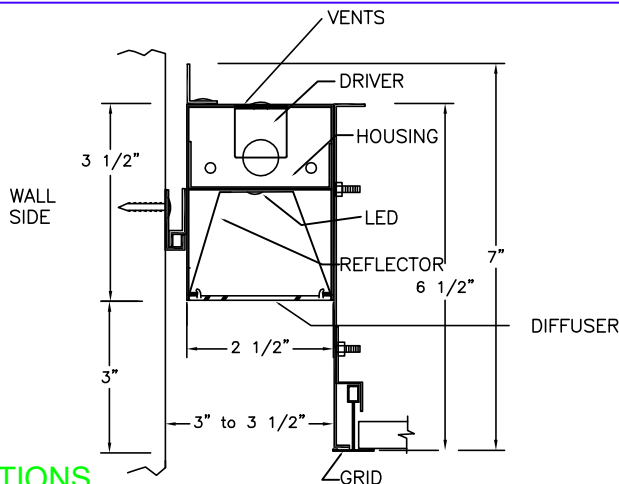
TO BE FORMED FROM 20GA CRS  
FINISH: BAKED WHITE ENAMEL WITH  
90% REFLECTIVITY

## MOUNTING

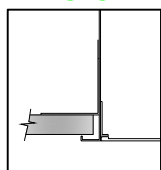
RECESSED MOUNTED  
SEE OPTIONS IN THE ORDERING KEY

## PRODUCT DESCRIPTION

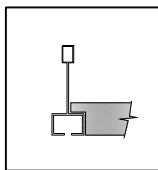
**THE SUFFUSEII LED INTEGRATES HIGH EFFICIENCY CONSTANT CURRENT LED TECHNOLOGY WITH A UNIQUE APPROACH TO LINEAR WALL WASHING AND GRAZING. THE ADVANCED DESIGN OF THE OPTICAL SYSTEM LED EMITS UNIFORM LIGHTING AND ILLUMINATES SHADOWS AND DARK CORNERS, DELIVERING CONTINUOUS UNINTERRUPTED LIGHT. 90° CORNERS, ARE AVAILABLE TO COMPLETE ANY CONFIGURATION OF FIXTURES.**



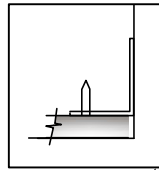
## CEILING OPTIONS



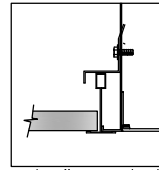
FLANGE (F)



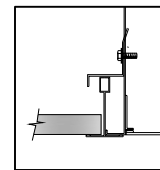
SLOT GRID (SG)



FLANGELESS (FO)



9/16" GRID (T1)



GRID (T)

## ORDERING KEY

SERIES	LUMENS/ft (W/ft)	LENGTH	COLOR TEMP	MOUNTING	VOLTAGE	OPTIONS
SUFFUSEII LED	<input type="checkbox"/> LO 611(6.5)	<input type="checkbox"/> 2'	<input type="checkbox"/> 2700K	<input type="checkbox"/> T1 9/16	<input type="checkbox"/> 120 V	<input type="checkbox"/> EM
	<input type="checkbox"/> MQ 849.5(9.15)	<input type="checkbox"/> 3'	<input type="checkbox"/> 3000K	<input type="checkbox"/> T	<input type="checkbox"/> 277 V	<input type="checkbox"/> DIM 0-10
	<input type="checkbox"/> HO 1002(11)	<input type="checkbox"/> 4'	<input type="checkbox"/> 3500K	<input type="checkbox"/> F	<input type="checkbox"/> UNV	<input type="checkbox"/> DALI
		<input type="checkbox"/> 6'	<input type="checkbox"/> 4000K	<input type="checkbox"/> SG		<input type="checkbox"/> Hilume 1%2 Wire-LTEA2W
		<input type="checkbox"/> 8'	<input type="checkbox"/> 5000K	<input type="checkbox"/> FO		<input type="checkbox"/> Hilume 1% Eco-LDE1
		<input type="checkbox"/> ROWS				<input type="checkbox"/> Hilume 5% LDE5

LUMENS WILL VARY DEPENDING ON DIFFUSER AND LED COLOR TEMP.

NATIONAL 3E/LED SERIES USES ENGINE/STICK ORIGINAL EQUIPMENT (BY OSRAM, PHILIPS, SAMSUNG, ET AL) WHICH ARE RATED FOR APPROXIMATELY 100 LM/W.T. ARCHITECTURAL LENSES PROVIDED WITH THE LUMINAIRES BY DESIGN EVEN THE BRIGHTNESS AND VISUAL COMFORT AND MIGHT FRACTIONALLY LOWER LMWT.

## TYPE:

## PROJECT:

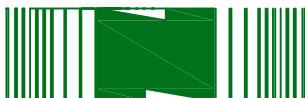
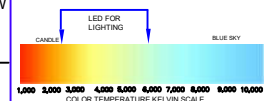
EVEN AND VISUALLY COMFORTABLE LED LIGHT DISTRIBUTION ACROSS PROFILE OF THE PRODUCT

50% ENERGY SAVINGS COMPARED TO LINEAR FLUORESCENT

SUSTAINABLE MATERIALS

ARRAY OF LUMEN OPTIONS ALL LM79/LM80 UL APPROVED

5 YEAR WARRANTY LED AND DRIVER



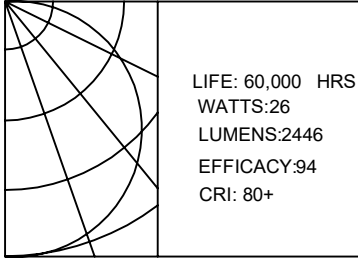
NJ 973-751-1600  
NY 212-751-1600  
FAX 973-751-4931  
WWW.NATLTG.COM

Modules and drivers are UL recognized components and RoHS compliant. LED modules also comply with IENSA LM-79 and LM-80 standards.

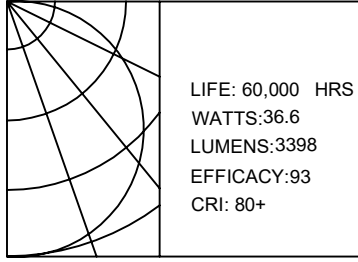


# PHOTOMETRIC REPORT

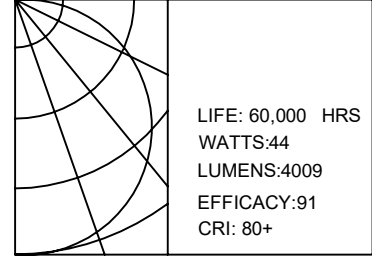
## SUFFUSEII-LED-LO



## SUFFUSEII-LED-MO



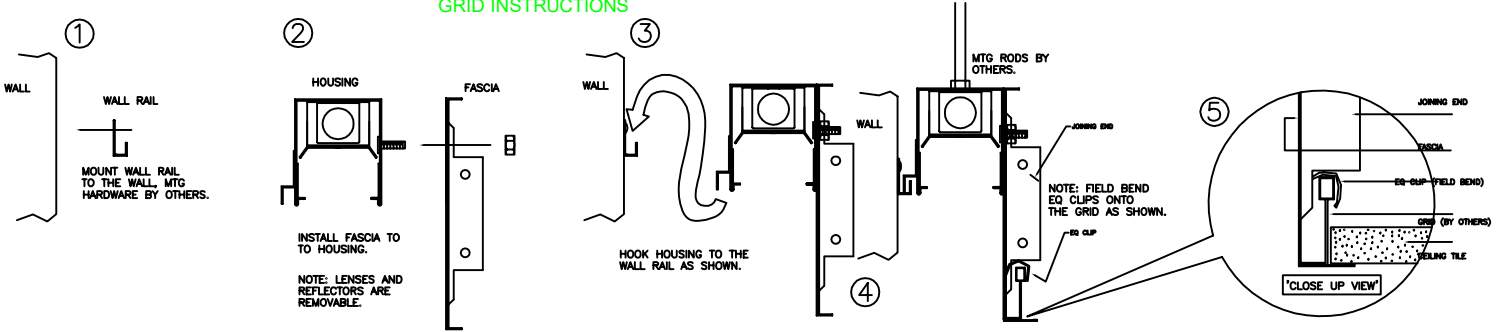
## SUFFUSEII-LED-HO



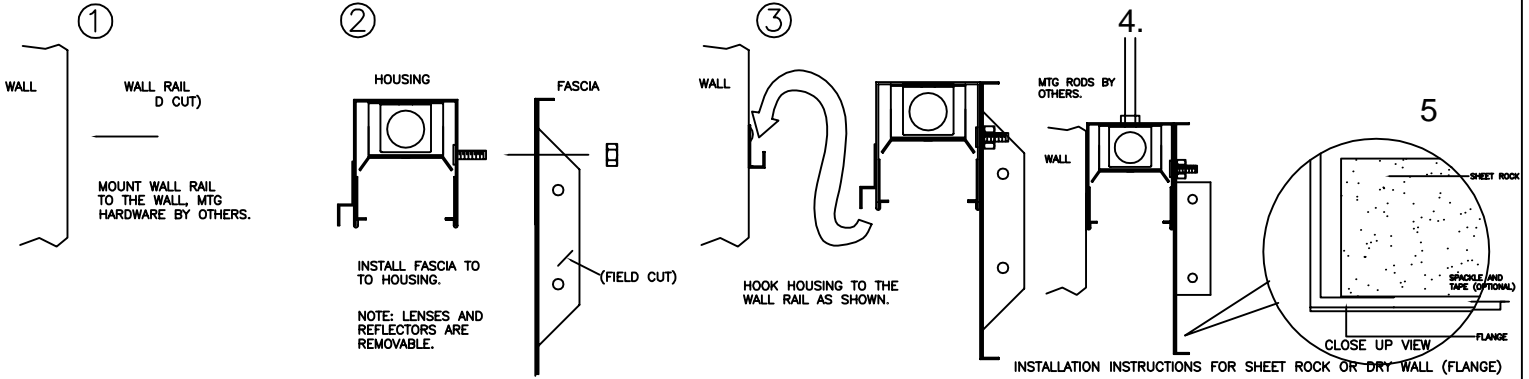
All values are based on 4' Section. Contact National for Asymmetric Options.

## INSTALLATION INSTRUCTIONS

### GRID INSTRUCTIONS



### FLANGED/ GYPBOARD CEILING

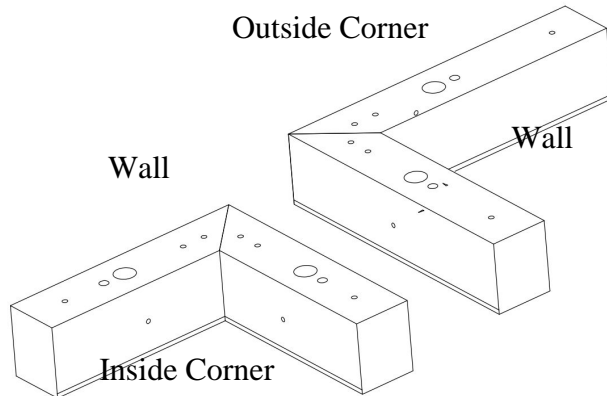


## LIGHTING CONTROL SOLUTIONS

- DIMMING ( 0-10V, DALI Or Lutron )**
  - 0-10V Dimming Driver used as standard.
  - Continuous Dimming up to 10%.
  - Dimming wires not provided unless specified
  - Contact National for Dali or Lutron Control system
- Occ/DAYLIGHT/Vacancy/Bi-Level**
  - Sensor-ready and compatible drivers provided.
  - Sensors can be field installed or could be installed in the fixtures
  - Bi-level dimming and Motion sensors also available
- Compatibility:**

National fixtures are compatible with Lutron, Philips Actilume, Magnum, Wattstopper, Hubbell , Leviton , Hytronik , Daintree & Enlighted Control System

## ILLUMINATED INSIDE AND OUTSIDE CORNER OPTIONS



JOB NAME	
CATALOG :	
TYPE:	